



**IDIOMAS  
PUCP**

# **ELETECA PLATFORM**

**TUTORIAL**

**FOR THE SPANISH FOR FOREIGNERS PROGRAM**



**VIEW SPANISH VERSION**





# CONTENTS

You can click on the titles to go directly to the section you want to review.

**A**

How can I register for ELEteca platform?

**B**

Activation code, class key entry and resource access.

**C**

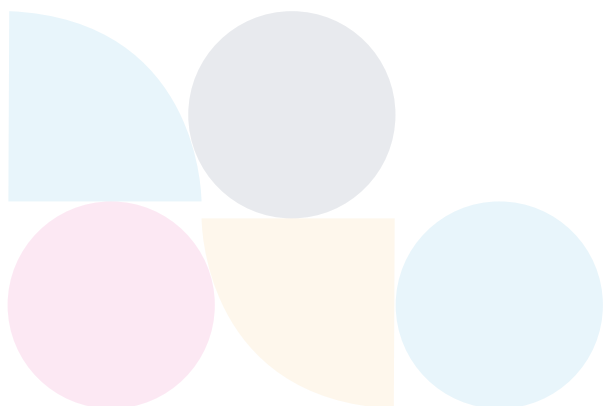
I already have an Edinumen account. Can I log in with it?

**D**

I have already activated my material and I want to join a new class.

**E**

Frequently Asked Questions (FAQs).



# A

## HOW CAN I REGISTER FOR ELETECA PLATFORM?

1

Create your Student account. Go to:

 <https://eleteca.edinumen.es>

2


Click on “Create new account”.



BACK TO CONTENTS


3


## Enter your personal information.





### Edinumen Account

With your Edinumen account, you will form part of our Community and you can access all our platforms, enjoy your eBooks, sign up for our events and training programmes, request digital samples and take advantage of different promotions and services.

You can change the language here. 



  
Personal  
information

  
Details

Fields marked with \* are required

First name \*

Alejandra

Last name \*

Ramos

e-mail \*

arev3680@gmail.com

Password \*

.....

Go Back

Previous

Next

Click **Next** to proceed to the next step.




BACK TO CONTENTS




4


Then, select the “Student” profile when completing the form. If you already have an Edinumen account, log in to the platform with your login details.




## Edinumen Account

With your Edinumen account, you will form part of our Community and you can access all our platforms, enjoy your eBooks, sign up for our events and training programmes, request digital samples and take advantage of different promotions and services.




Personal information


Details

Fields marked with \* are required

**Profile \***

Select your profile. It's very important to select the correct profile, it will give you access to different materials.

☐ Teacher
 ☒ Student

**Country \***

Select your country.


**Birth date \***

Select your date of birth.

You must accept the privacy policy and usage terms:

☐ I have read and accept the [privacy policy](#)..

Please verify you are not a robot



Enter the verification code.

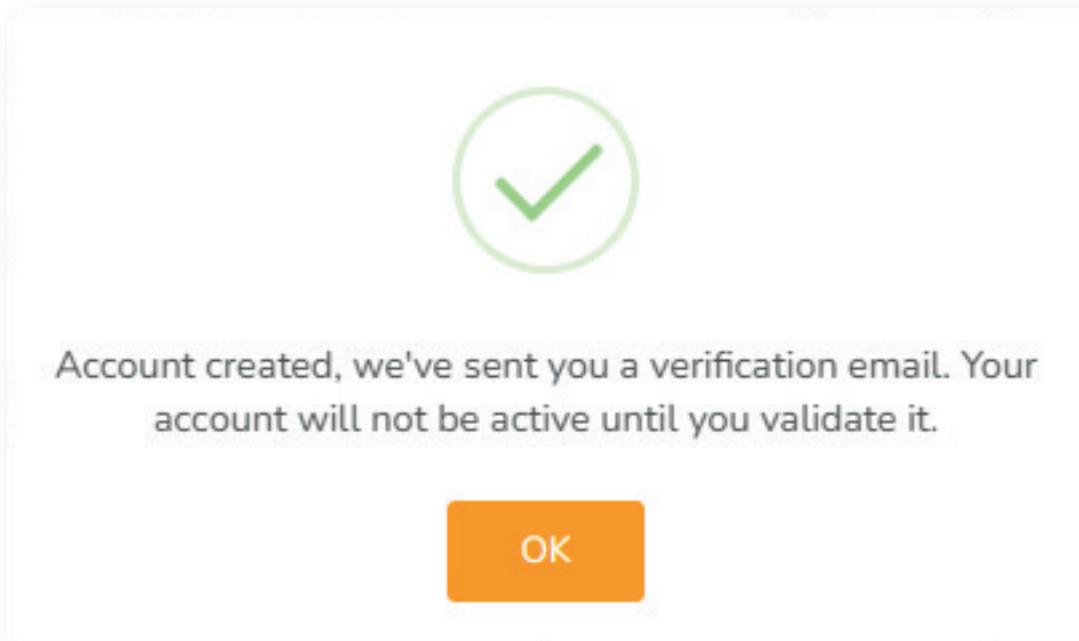
Go Back
Previous
Next
Create account

Select “Create account”.


[BACK TO CONTENTS](#)

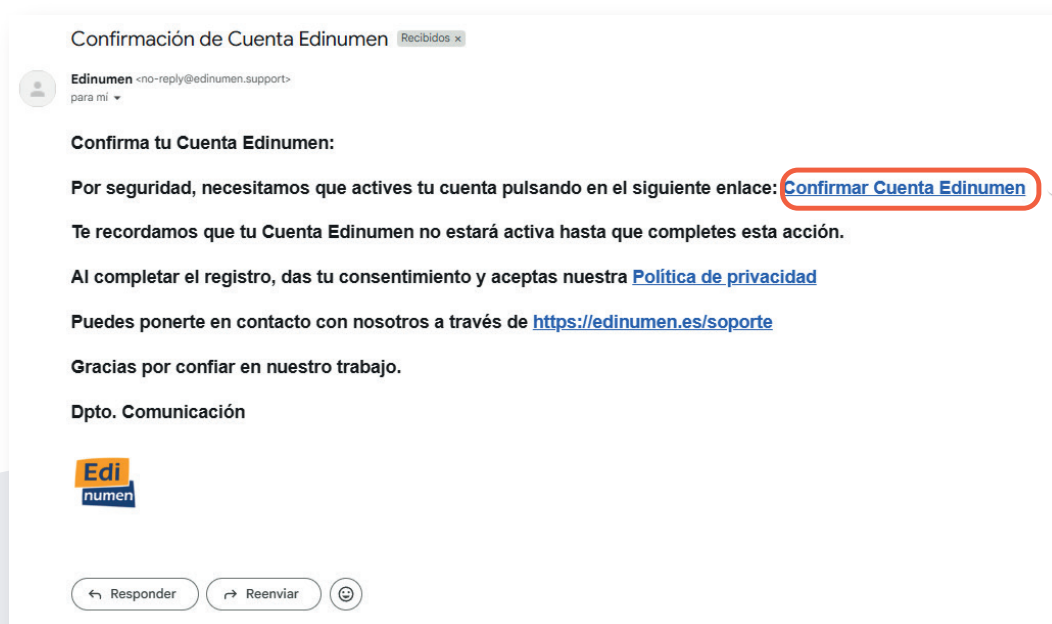
5

Once your registration is complete, a message will appear on the screen confirming that your account has been created.



6

You will receive a confirmation email from Edinumen. For security reasons, you must activate your account by clicking the link “**Confirm Edinumen Account** (Confirmar Cuenta Edinumen)” included in the email.



BACK TO CONTENTS

7

After confirming your account, go to the ELEteca platform and log in with your email and password.

Editorial **Edinumen**

## Introduce tu usuario (E-mail) y contraseña

Recuerda que tienes que estar registrado para acceder a este sitio.  
Las cookies deben estar habilitadas en tu navegador.

E-mail \*

Contraseña \*

Atrás Entrar

☐ Recuérdame [¿Olvidaste tu contraseña?](#)

— O entra con —

Classlink Google Clever

# B

## ACTIVATION CODE, CLASS KEY AND RESOURCE ACCESS

### 1

Once you have created your account on the ELEteca platform, you will need to log in with your username (email) and password:

Editorial **Edinumen**

### Introduce tu usuario (E-mail) y contraseña

Recuerda que tienes que estar registrado para acceder a este sitio.  
Las cookies deben estar habilitadas en tu navegador.

E-mail \*

E-mail

Contraseña \*

Contraseña

Atrás

Entrar

☐ Recuérdame

[¿Olvidaste tu contraseña?](#)

— O entra con —

Classlink Google Clever



BACK TO CONTENTS



2

The **activation code** is a code that grants access to certain digital content. This code can be found printed on the first pages of the paperback (if you purchased the physical book) or will be sent to the email you registered when you enrolled if you purchased the virtual material.

## EXTENSIÓN DIGITAL en **ELEteca**



Un espacio en constante actualización

- Las actividades de este libro se amplían y complementan en nuestra plataforma educativa.
- Para acceder a este espacio, entra en la **ELEteca** (<https://eleteca.edinumen.es>), activa el código que tienes a continuación y sigue las instrucciones.

**CÓDIGO DE ACCESO**

**XXXXXXXXXX**

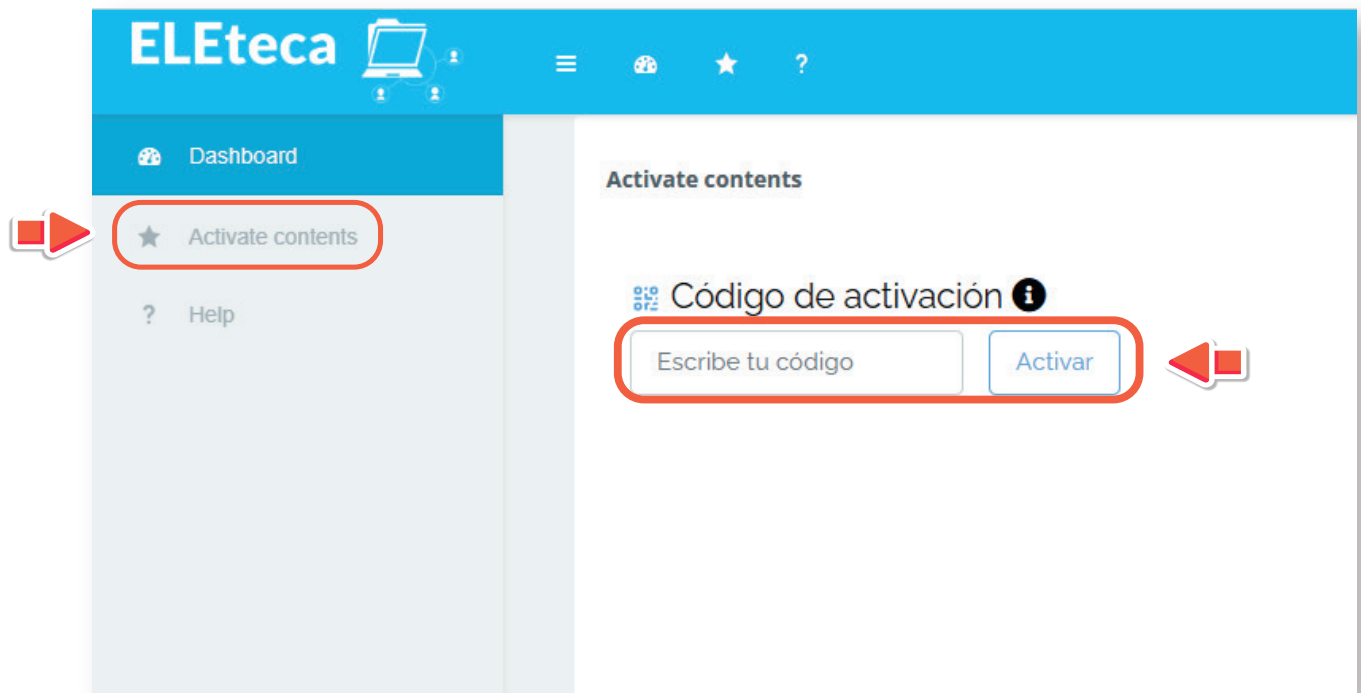
Para más información, consultar los términos de uso de la ELEteca.



BACK TO CONTENTS

3

Activate your digital content using your activation code. Once inside, go to the “Activate contents” section, enter your code in the “Escribe tu código” field, and click on “Activar”.



### IMPORTANT

- The platform tells me that the code is incorrect or already exists.

Book codes are for one use only, and the one you're trying to activate may have already been used. This may happen if it's a secondhand or library book. If neither is your case contact your institution immediate authority:

**idiomas-plataformas@pucp.edu.pe**

4

A screen will appear with information about the content activated by the code you entered and the license duration.

**Activate contents**

Estás a punto de activar el código tnyjsMRG75. Una vez activado, este código te dará acceso a los contenidos de la licencia. Sigue las instrucciones y completa tu activación.

**In this section, you will be able to see the expiration date of your license.**

INMERSIÓN A1 - Libro del estudiante/Libro de ejercicios

Duración: Si activas este código ahora, podrás acceder a los siguientes materiales desde el **10/Nov/2025** hasta el **22/May/2027**. Si deseas activarlo, continúa con el proceso. Si prefieres activarlo en otro momento, puedes cancelar y reanudar el proceso más adelante.

**Here you can view the information related to the activated code content.**

- INMERSIÓN A1 - Extensión digital del estudiante

**Atención, algunos de estos materiales permiten ser utilizados dentro de una clase. Selecciona tu opción:**

- Si estudias con un profesor/a, introduce la **Clave de tu clase** (pídesela a tu profesor/a para completar el proceso).
- Si estudias por tu cuenta y no perteneces a ninguna clase, elige la opción "No tengo clave de clase".

☒ Clave de clase

☐ No tengo clave de clase


Cancelar Activar

[BACK TO CONTENTS](#)

5


If you are studying with a teacher, to access the materials associated with your class, you will need to enter your **class key (clave de clase)**, which will be provided by your teacher. To join the class, enter the provided class key and click on **"Activate" (activar)**.

**Activate contents**




Estás a punto de activar el código tnyjsMRG75. Una vez activado, este código te dará acceso a los materiales que aparecen a continuación. Revisa las instrucciones y completa tu activación.

**INMERSIÓN A1 - Libro del estudiante/Libro de ejercicios**



Duración: Si activas este código ahora, podrás acceder a los siguientes materiales desde el **10/Nov/2025** hasta el **22/May/2027**. Si deseas activarlo, continúa con el proceso. Si prefieres activarlo en otro momento, puedes cancelar y reanudar el proceso más adelante.

- INMERSIÓN A1 - eBook del estudiante
- INMERSIÓN A1 - Extensión digital del estudiante



**Atención, algunos de estos materiales permiten ser utilizados dentro de una clase. Selecciona tu opción:**


- Si estudias con un profesor/a, introduce la **Clave de tu clase** (pídesela a tu profesor/a para completar el proceso).
- Si estudias por tu cuenta y no perteneces a ninguna clase, elige la opción "No tengo clave de clase".

☒ Clave de clase

☐ No tengo clave de clase

Cancelar

Activar





**ELEteca provides the key when your teacher creates their class. If you don't have the class key, please ask for it.**



**IMPORTANT: If your teacher has already enrolled you in their class, you can access it using the information they provide. They may also have sent you an invitation to your email. Just follow the instructions in the email. You can see this process in detail in the help section of this tutorial: "I received an invitation to my email ."**




**BACK TO CONTENTS**




6

If, on the other hand, you are studying on your own and do not belong to any specific class, click the button with a check mark next to **“No tengo clave de clase”** and click on **“Activar”**.


**Activate contents**

 Estás a punto de activar el código trnjsMRG75. Una vez activado, este código te dará acceso a los materiales que aparecen a continuación. Revisa las instrucciones y completa tu activación.

**INMERSIÓN A1 - Libro del estudiante/Libro de ejercicios**

 Duración: Si activas este código ahora, podrás acceder a los siguientes materiales desde el **10/Nov/2025** hasta el **22/May/2027**. Si deseas activarlo, continúa con el proceso. Si prefieres activarlo en otro momento, puedes cancelar y reanudar el proceso más adelante.

- INMERSIÓN A1 - eBook del estudiante
- INMERSIÓN A1 - Extensión digital del estudiante

**Atención, algunos de estos materiales permiten ser utilizados dentro de una clase. Selecciona tu opción:**

- Si estudias con un profesor/a, introduce la **Clave de tu clase** (pídesela a tu profesor/a para completar el proceso).
- Si estudias por tu cuenta y no perteneces a ninguna clase, elige la opción 'No tengo clave de clase'.

☒ Clave de clase

☐ No tengo clave de clase

Cancelar

Activar

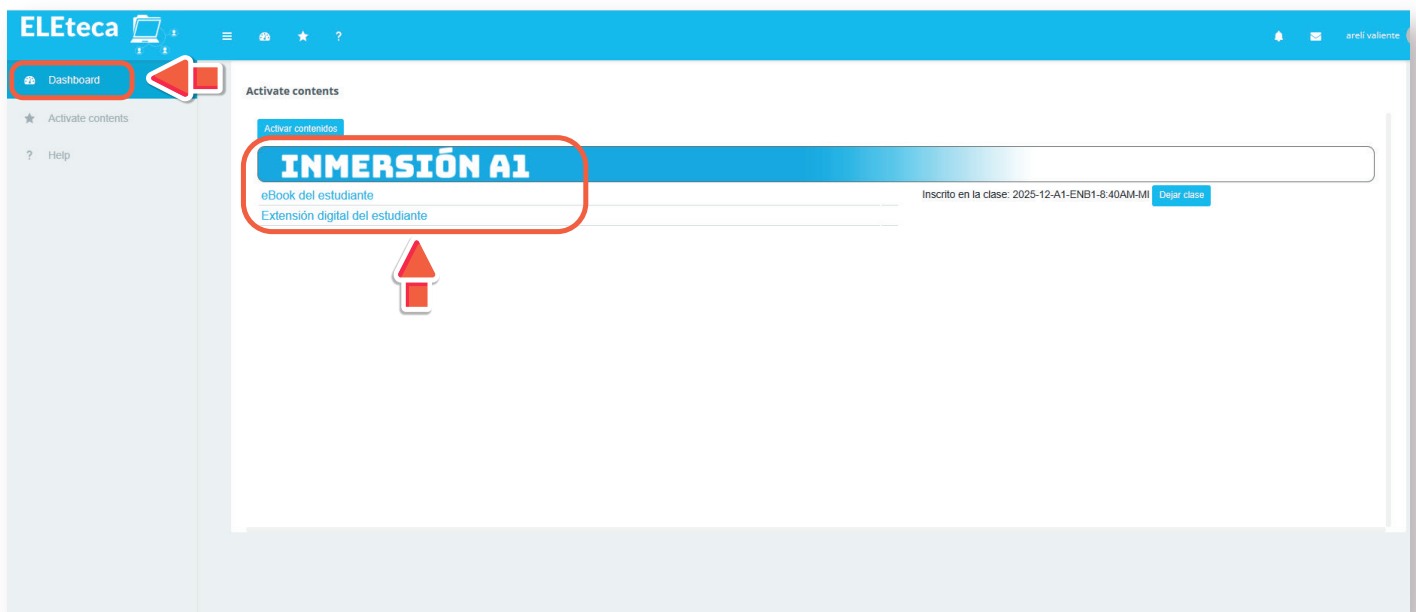


BACK TO CONTENTS

7

Access the resources. Once you have activated the code, your content will appear in your “**Dashboard.**” You can access the materials by clicking the link.

From now on, by logging into the platform from any device with an internet connection, you will be able to enjoy your content.



If you're studying with a teacher and at some point want to leave your class and continue working independently, you can click the "Leave Class" button. If, on the other hand, you've chosen to work independently and later study with a teacher, you'll simply need to ask for their "Class Key" to enroll in their class.



BACK TO CONTENTS



## ***I ALREADY HAVE AN EDINUMEN ACCOUNT. CAN I LOG IN WITH IT?***

1

If you already have an Edinumen account, go to:



<https://eleteca.edinumen.es>

Click “Enter” and enter your username (email) and password to access ELEteca.



BACK TO CONTENTS

2

If you don't remember your password, go to:

 <https://cuenta.edinumen.es/resetpasswd>

Enter your email address to request a new password.

## Reset your password

If you would like to change your password, please enter your user name (e-mail).

Email

If you do not see an email in your inbox, please check your spam folder.  
Please verify you are not a robot.

☐ No soy un robot  
reCAPTCHA va a cambiar sus términos del servicio. [Toma medidas](#)

reCAPTCHA  
Privacidad - Términos

Reset your password

Go Back

Copyright © 2019 Edinumen.

[Privacy policy](#) | [Terms of use](#) | [Cookies policy](#)

### IMPORTANT

- If you don't receive your Edinumen account confirmation or password reset email, it may be in your spam folder. Please check your spam folder. If it still isn't there, please contact us at:  
**idiomas-plataformas@pucp.edu.pe**



BACK TO CONTENTS





## ***I HAVE ALREADY ACTIVATED MY MATERIAL AND I WANT TO JOIN A NEW CLASS***

1

Go to your dashboard. Enter your **Class Code** (Clave de clase) in the field provided and click the confirmation button to join the class.

Dashboard

Activar contenidos

### INMERSIÓN A1

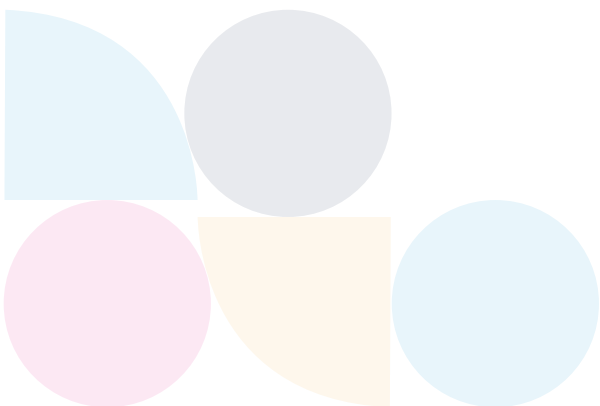
eBook del estudiante

Extensión digital del estudiante

Ahora mismo no estás matriculado en ninguna clase. Para completar tu activación y utilizar el material elige la opción de como deseas utilizarlo:  
Tengo un profesor y quiero inscribirme en mi clase ?

Clave de clase

Quiero estudiar por mi cuenta: ?





## **FREQUENTLY ASKED QUESTIONS (FAQS)**

- What access does the activation code provide and for how long?

Depending on the material you have purchased, your code will activate certain digital content (a digital extension of a manual, an eBook with its digital resources, an interactive resource, the Guadalingo video game, etc.).

Each code has a specific duration (license of use) from the moment it is activated. Once this period ends, the content will no longer be active. When a license is about to expire soon, a message will appear on the platform:

### **Mis clases**

Los siguientes materiales van a caducar pronto, por favor contacte con su comercial

- Espacio Joven A2 2 Profesor expira el 15/05/2020



BACK TO CONTENTS

- **What is the Class Key?**

The Class Key is a password that the platform automatically generates when your teacher creates a class and you need it to enroll in their class.

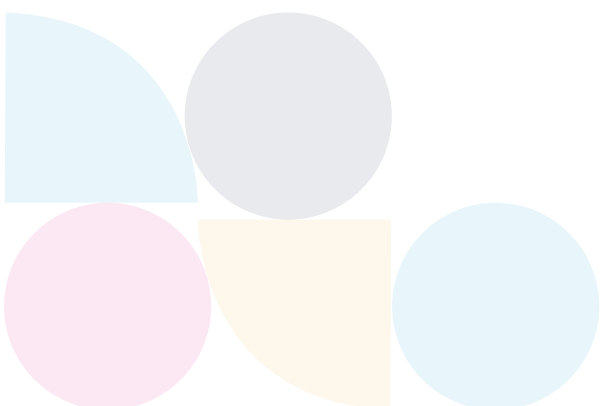
If you don't have the class key, please ask your teacher for it.

- **Is it necessary to be in a class to access the resources?**

No, when you activate a code you can choose to study within a class or study on your own.

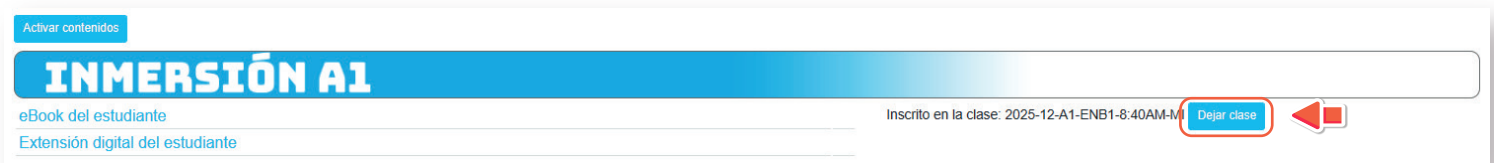
If you're studying with a teacher and they want to enroll you in a class, you'll need to select this option when validating your activation code. In this case, you'll need to enter the "Class Key" provided by your teacher.

If you are studying on your own, you can complete the process and begin using the materials by selecting the "I don't have a class key" option when validating your activation code.



- Can I drop a class and start studying on my own?

Yes. If at any time you want to leave your class and continue working on your own, you can click the **“Leave Class”** button that appears in the course information on the **“My Courses”**.



- I signed up for a class, but when I go to the resources section, I don't see anything. What's going on?

If you've enrolled in a class after activating the code, but don't see any activities when you go to the resources, let your teacher know. They may have created the class but not yet set up the activities.

